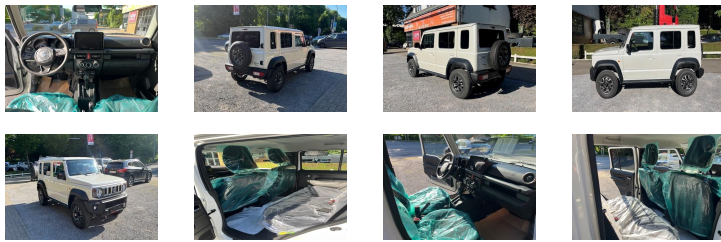


SUZUKI JIMNY GLX WITH GERMAN HOMOLOGATION 1.5L 5 DOORS/PORTES



Ref :	3318
Brand :	SUZUKI
Series :	JIMNY
Model :	GLX WITH GERMAN HOMOLOGATION
Version :	TROPICAL
Year :	2026
Doors :	5
Seats :	4
Engine :	PETROL, 4 CYLINDERS
CC :	1462
CV DIN :	100
Gear box :	AUTOMATIC 4X4
Wheelbase :	2590
Dimensions (m) :	L:3.985 - WI: 1.645 H: 1.72 - 11.28M3
Alloy wheels :	15
Tyres :	195/80/R15

Main standard equipment

- Power steering
- ABS
- Central locking with remote control
- Heating system
- Fabric seats
- 4 seater
- Seat belt for all seats
-
- Audio control on the steering wheel
- Spare tyre on rear door
- Big front screen
- Bluetooth hands free
- Driver & passenger airbags
- Wide overfenders/ flares
- Automatic air conditioning
- Electric windows (4)
- Cruise Control
- Rear parking sensor
- Xenon headlamps
- AUTOMATIC HEADLIGHTS
- Rear view camera
- Foldable outside mirrors
- Electric outside mirrors
- Radio AM/FM + USB
- ISOFIX child seat attachment
- Manually adjustable steering wheel
- FR & RR foglamps

www.transautomobile.com/en/A-3318

* Version with german homologation but without European certificate of conformity

* For more information please contact Mr. Vincent Bayet on +32 473 21 22 00

We can provide and install accessories for this model !

**ORDER YOUR ACCESSORIES
AND MAINTENANCE KITS**

Specs might change regarding production year.
Our general conditions of sale are available on our website at www.transautomobile.com
Non-binding photographs

Our services



Transport



Insurance



Spare parts