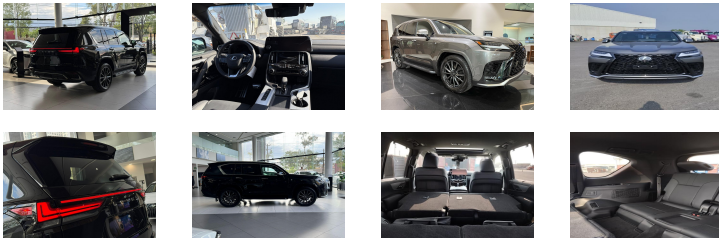


LEXUS LX 700 F-SPORT 3.4L



NEW MODEL. Tropical version for export outside E.U only



Ref :	3379
Brand :	LEXUS
Series :	LX 700
Version :	2026
Doors :	4
Seats :	7
Engine :	MILD HYBRID - PETROL, 6 CYLINDERS
CC :	3445
CV DIN :	463
Gear box :	10-SPEED 4X4
Wheelbase :	2850
Weight (Kg)	GROSS WEIGHT : 3380 - TARE : 2825 PAYLOAD : 555
Alloy wheels :	22

Main standard equipment

- 7 seats
- Electric Power Assisted Steering (EPAS)
- Crawl system
- Multi-terrain Select
- HAC
- Adaptive Variable Suspension
- Limited slip differential
- Heated, Ventilated Front seats
- Electric front seats
- Driver seat with memory
- DRIVER'S SEAT WITH MASSAGE
- VENTILATED SECOND ROW OF SEATS
- Leather seats
- 12.3-inch touch display
- ANDROID AUTO & APPLE CARPLAY+ Wireless
- Electric sunroof
- Smart Key & button start
- Front LED headlights
- LED fog lights
- LED Daytime Running Lights
- Heated outside mirrors
- Electric outside mirrors
- Automatic windshield wiper
- Heated steering wheel
- Leather and wood steering wheel
- Head-up display
- Wireless charger
- Automatic climate control 4 zones
- F SPORT Pack
- Coolbox
- Electronic Traction Control (ETC)
- Blind Spot Monitor
- Tire Pressure Monitor
- Parking assistance
- AIRBAGS (10)
- Immobilizer + Alarm system
- 4 Cameras with Panoramic & Wide angel view
- Multi-terrain monitor

www.transautomobile.com/en/A-3379

* For more information please contact Mrs. Maria Dineiro +34 691 81 1997

* Other configuration available

We can provide and install accessories for this model !

**ORDER YOUR ACCESSORIES
AND MAINTENANCE KITS**

Specs might change regarding production year.
Our general conditions of sale are available on our website at www.transautomobile.com
Non-binding photographs

Our services



Transport



Insurance



Spare parts