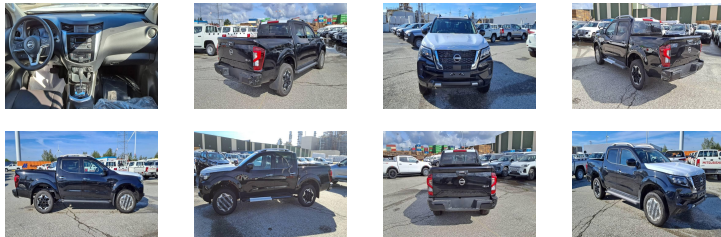


NISSAN NAVARA 2.5L 4X4 AUTO MEDIUM



Main standard equipment

- Front and rear mudguard
- ABS
- Air conditioning
- Power windows
- 18' ALLOY WHEELS
- Radio
- Multi functions steering wheel
- Airbags
- Leather seats
- Steps
- Central locking
- Driver's electric seat

www.transautomobile.com/en/A-3390

* For further information, please contact Marie Van Beneden by phone: +32 2 352 01 31 or by email: mvb@transauto.be

* Tropical version without european certificate of conformity and only for export outside European Union

We can provide and install accessories for this model !

Ref :	3390
Brand :	NISSAN
Series :	NAVARA
Version :	TROPICAL
Year :	2025
Seats :	5
Engine :	TURBO DIESEL, 4 CYLINDERS
CC :	2488
CV DIN :	160
Gear box :	AUTOMATIC 4X4
Dimensions (m) :	L:5.26 - WI: 1.875 H: 1.845 - 18.2M3
Alloy wheels :	18
Tyres :	255/60/R18

**ORDER YOUR ACCESSORIES
AND MAINTENANCE KITS**

Specs might change regarding production year.
Our general conditions of sale are available on our website at www.transautomobile.com
Non-binding photographs

Our services



Transport



Insurance



Spare parts